

## Single frequency 1053 nm DFB laser diode 70 mW/singlemode fiber/butterfly package/mode hop free

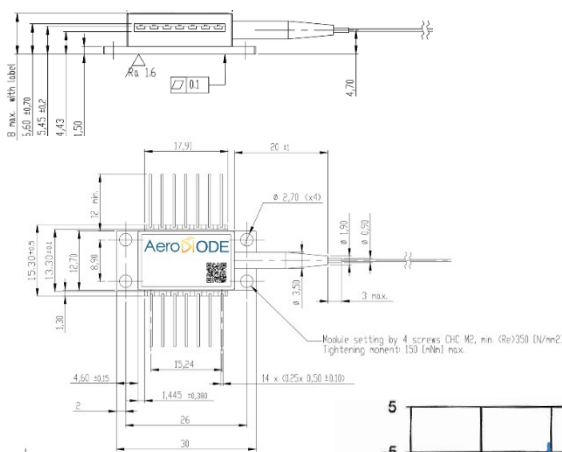
Reference: 1053LD-3-0-0-(PM)

SPECIFICATIONS	Unit	Min	Typ	Maximum
Output Power	mW	65	70	
Center Wavelength (25°C)*	nm	1052.0	1053.0	1054.0
Spectral Width (FWHM)**	kHz		100	
Threshold Current	mA		20	80
Operating Current	mA		250	300
Operating Voltage	V		1.5	2.0
Wavelength shift w Temperature	nm/°C		0.085	
Wavelength shift w Current	nm/mA		0.002	
Side mode suppression ratio	dB	40	55	
Internal photodiode responsivity	mA/W	0.04	2	10
Internal photodiode dark current	nA		5	40
TEC current (25°/case@70°)	A		1.1	3.0
TEC voltage (25°/case@70°)	V		1.9	4.0
Internal thermistor (25°)	kOhm	9.5	10	10.5
Fiber type (OPTION : PM fiber)	Hi1060 or equivalent (PM980 or equivalent)			
PER	dB	15	18	
Fiber connector	Yes (FC/APC)			
Storage temperature	°C	-40		85
Operating case temperature	°C	0		70
Operating chip temperature	°C	5		50
Laser diode reverse voltage (absolute maximum rating)	V			2

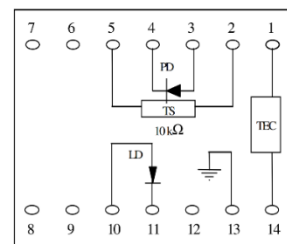
\*: Tunable by adjusting the chip temperature

\*\* : Mode hop free single frequency device – phase noise measurement method

### Form factor:



### Laser diode pin configuration:



Totally floating pin-out

